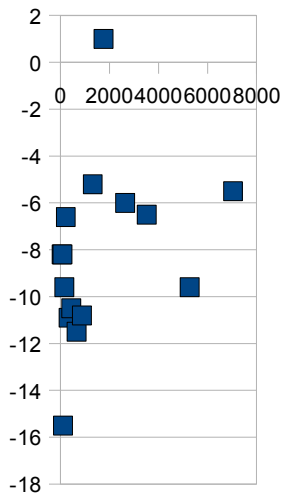
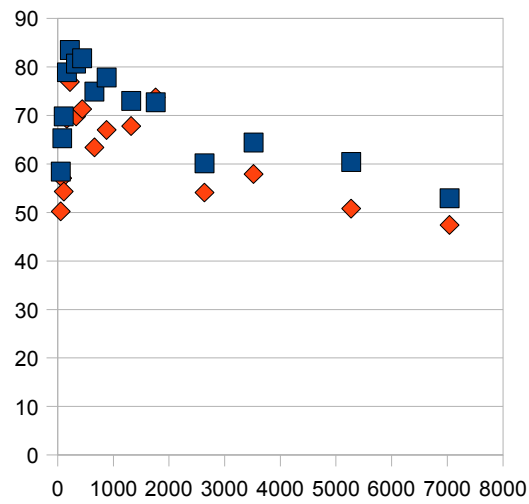


#	.5m (dB)	1m (dB)	Frequency (Hz)	Difference
1	58.4	50.2	55	-8.2
2	65.3	57.1	82	-8.2
3	69.8	54.3	110	-15.5
4	78.9	69.3	165	-9.6
5	83.5	76.9	220	-6.6
6	80.7	69.8	330	-10.9
7	81.8	71.3	440	-10.5
8	74.9	63.4	659	-11.5
9	77.8	67	880	-10.8
10	73	67.8	1319	-5.2
11	72.7	73.7	1760	1
12	60.1	54.1	2637	-6
13	64.4	57.9	3520	-6.5
14	60.4	50.8	5274	-9.6
15	52.9	47.4	7040	-5.5



■ Column F



■ .5m (dB)  
◆ 1m (dB)